

Chiswell Regular  
Chiswell Caption Regular

---

Um tipo de letra Garalda  
(Vox-Atypi), originado de um  
exercício de revival da Caslon,  
com influências de Fournier.

---

FACULDADE DE BELAS ARTES  
DA UNIVERSIDADE DO PORTO.

Chiswell

Christ  
Regt

well  
ular

Chiswell Caption Regular

Sobre a Chiswell

4-5

Linguagens suportadas

6-7

Índice

Especificações técnicas

8-9

Lista de caracteres

IO-II

OpenType Features

12-13

Exemplos de textos

16-23

Mapa de Glifos

24-25

Tipo de letra em uso

14-15 / 26-45.

## INTRODUÇÃO & CONTEXTUALIZAÇÃO

Chiswell é um tipo de letra Garalda otimizado para texto e legendas, ideal para composição de projectos editoriais, identidades, construção de produtos gráficos contemporâneos, mas sóbrios.

Com uma altura de x acentuada, gestos clássicos e um diverso set de caracteres, Chiswell é capaz de manter o seu charme, otimizando a composição de textos em tamanhos mais pequenos, recorrendo ao seu corte óptico (caption). Suporta cerca de 67 línguas.

Intersectando a influência destes dois célebres tipógrafos — Caslon e Fournier — Chiswell possui a intemporalidade e racionalidade de ambos, enquanto oferece uma revisão contemporânea, mantendo também alguma classe e austeridade.

Chiswell foi produzida sob a alçada da unidade curricular de Design de Tipos, leccionada por Pedro Amado, integrando o Mestrado de Design Gráfico e Projectos Editoriais da Faculdade de Belas Artes na Universidade do Porto.

Afrikaans, Albanian, Asu, Ba  
Catalan, Chiga, Cornish, Dan  
Faroese, Filipino, Finnish,  
German, Gusii, Indonesian,  
Kalenjin, Kinyarwanda, Lu  
Machame, Makhuwa-Meetto  
Morisyen, North Ndebele, No  
Nynorsk, Nyankole, Oron  
Romansh, Rombo, Rundi, R  
Scottish Gaelic, Sena, Shar  
Spanish, Swahili, Swedish, v  
Uzbek (Latin), Vo



Basque, Bemba, Bena, Breton,  
Catalan, Dutch, English, Estonian,  
Finnish, French, Friulian, Galician,  
German, Irish, Italian, Kabuverdianu,  
Kikuyu, Luxembourgish, Luyia,  
Luo, Makonde, Malagasy, Manx,  
Norwegian Bokmål, Norwegian  
Nynorsk, Portuguese, Quechua,  
Rwanda, Samburu, Sango, Sangu,  
Sinhala, Shona, Soga, Somali,  
Swiss German, Taita, Teso,  
Tswana, Ylapük, Vunjo, Zulu

Cortes: 2

Pesos: (1) Regular

Estilos: (1) Romano

Glifos por corte: 245

Glifos na família: 490

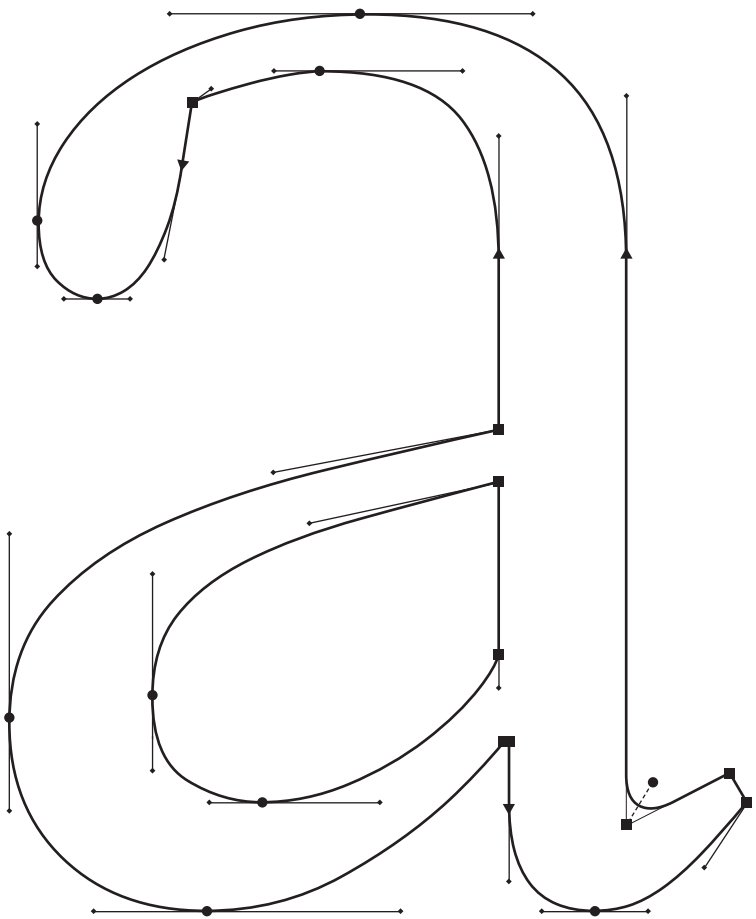
Pares de Kerning: 504

OpenType Features: Figuras

Oldstyle, Ligaduras, Kerning

Classificação: Serifada, Garalda

Designer: Ricardo Philippe Dantas



## Maiúsculas

A B C D E F G H I J K L M N  
O P Q R S T U V W X Y Z

## Minúsculas

a b c d e f g h i j k l m n  
o p q r s t u v w x y z

## Maiúsculas com diacríticos

Á Â Ã Ä Å Æ AÉ Ç É Ê Ë  
È Ğ Í Î Ï Ĺ Ń Ó Ô Õ Ö Ø Ò  
Œ Þ Š Ť Ú Û Ü Ý Ÿ Ž

## Minúsculas com diacríticos

á â ã ä å æ ç é ê ë è í î ï ï ï ï ñ  
ń ñ ó ô ò ö õ ø œ þ š ú û ù ü ý  
ÿ ž þ ß ð

### Pontuação

! ; ? ; & ’ “ ( ) \* . : , ; … · @ \ [ ] / \_  
{ } « » - – — ’ ’ ’ ’ ’ ’ ’ ’ ’ ’ ’ ’

### Símbolos matemáticos

$\prod$   $\int$   $\Delta$   $\pi$   $\Sigma$   $\infty$   $\approx$   $\neq$   $+$   $-$   $<$   
 $=$   $>$   $\neg$   $\pm$   $\times$   $\div$   $\#$   $\%$   $\%00$   $^\circ$

### Números

0 1 2 3 4 5 6 7 8 9

### Símbolos

! § © ® ¶ ™ ◇ @ & † ‡

### Moeda

\$ ¢ £ ¤ ¥ € f

Figuras OldStyle

I978 0123456789

Ligaduras

fi fl

per**fi**l —

**fl**oral —

— perf~~fl~~

— ~~f~~loral







Chiswell Caption Regular 6/9pt

Traditionally, text is composed to create a readable, coherent, and visually satisfying typeface that works invisibly, without the awareness of the reader. Even distribution of typeset material, with a minimum of distractions and anomalies, is aimed at producing clarity and transparency. Choice of typeface(s) is the primary aspect of text typography—prose fiction, non-fiction, editorial, educational, religious, scientific, spiritual, and commercial writing all have differing characteristics and requirements of appropriate typefaces and their fonts or styles.

Chiswell Caption Regular 7/10pt

Traditionally, text is composed to create a readable, coherent, and visually satisfying typeface that works invisibly, without the awareness of the reader. Even distribution of typeset material, with a minimum of distractions and anomalies, is aimed at producing clarity and transparency. Choice of typeface(s) is the primary aspect of text typography—prose fiction, non-fiction, editorial, educational, religious, scientific, spiritual, and commercial writing all have differing characteristics and requirements of appropriate typefaces and their fonts or styles.

Traditionally, text is composed to create a readable, coherent, and visually satisfying typeface that works invisibly, without the awareness of the reader. Even distribution of typeset material, with a minimum of distractions and anomalies, is aimed at producing clarity and transparency. Choice of typeface(s) is the primary aspect of text typography—prose fiction, non-fiction, editorial, educational, religious, scientific, spiritual, and commercial writing all have differing characteristics and requirements of appropriate typefaces and their fonts or styles.

Traditionally, text is composed to create a readable, coherent, and visually satisfying typeface that works invisibly, without the awareness of the reader. Even distribution of typeset material, with a minimum of distractions and anomalies, is aimed at producing clarity and transparency. Choice of typeface(s) is the primary aspect of text typography—prose fiction, non-fiction, editorial, educational, religious, scientific, spiritual, and commercial writing all have differing characteristics and requirements of appropriate typefaces and their fonts or styles.

Chiswell Regular 7/11pt

Traditionally, text is composed to create a readable, coherent, and visually satisfying typeface that works invisibly, without the awareness of the reader. Even distribution of typeset material, with a minimum of distractions and anomalies, is aimed at producing clarity and transparency. Choice of typeface(s) is the primary aspect of text typography—prose fiction, non-fiction, editorial, educational, religious, scientific, spiritual, and commercial writing all have differing characteristics and requirements of appropriate typefaces and their fonts or styles.

Chiswell Regular 10/13pt

Traditionally, text is composed to create a readable, coherent, and visually satisfying typeface that works invisibly, without the awareness of the reader. Even distribution of typeset material, with a minimum of distractions and anomalies, is aimed at producing clarity and transparency. Choice of typeface(s) is the primary aspect of text typography—prose fiction, non-fiction, editorial, educational, religious, scientific, spiritual, and commercial writing all have differing characteristics and requirements of appropriate typefaces and their fonts or styles.

Traditionally, text is composed to create a readable, coherent, and visually satisfying typeface that works invisibly, without the awareness of the reader. Even distribution of typeset material, with a minimum of distractions and anomalies, is aimed at producing clarity and transparency.

Chiswell Regular 9/13pt

Choice of typeface(s) is the primary aspect of text typography—prose fiction, non-fiction, editorial, educational, religious, scientific, spiritual, and commercial writing all have differing characteristics and requirements of appropriate typefaces and their fonts or styles.

Traditionally, text is composed to create a readable, coherent, and visually satisfying typeface that works invisibly, without the awareness of the reader. Even distribution of typeset material, with a minimum of distractions and anomalies, is aimed at producing clarity and transparency.

Chiswell Regular 8/12pt

Choice of typeface(s) is the primary aspect of text typography—prose fiction, non-fiction, editorial, educational, religious, scientific, spiritual, and commercial writing all have differing characteristics and requirements of appropriate typefaces and their fonts or styles.

ChiswellCaption Regular 40/45pt

the five boxes  
jump quickly  
red box with

Chiswell Regular 40/45pt

dozen quality  
a very big box  
up then which  
quickly from

king wizards  
ly, pack my  
h five

y jugs  
ox sailed  
zzed

n japan

Chiswell Regular Caption 100/8opt

COMET  
1932-51



Chiswell Regular 100/8opt

HOUSE  
£672.35

	!	"	#	\$	%	&	'	( )	
*	+	,	-	.	/	o		2	3
4	5	6	7	8	9	:	;	<	=
>	?	@	A	B	C	D	E	F	G
H	I	J	K	L	M	N	O	P	Q
R	S	T	U	V	W	X	Y	Z	[
\	]	^	_	`	a	b	c	d	e
f	g	h	i	j	k	l	m	n	o
p	q	r	s	t	u	v	w	x	y
z	{		}	~	ı	ç	£	¤	¥
ı	§	¨	©	«	¬	®	-	°	±
´	¶	·	,	»	¼	½	¾	¿	À
Á	Â	Ã	Ä	Å	Æ	Ç	È	É	Ê
Ë	Ì	Í	Î	Ï	Ð	Ñ	Ò	Ó	Ô
Õ	Ö	×	Ø	Ù	Ú	Û	Ü	Ý	Þ

ß	à	á	â	ã	ä	å	æ	ç	è
é	ê	ë	ì	í	î	ï	đ	ñ	ò
ó	ô	õ	ö	÷	ø	ù	ú	û	ü
ý	þ	ÿ	Č	ı	Ł	ł	ń	ň	Œ
œ	Š	š	Ť	Ÿ	Ž	ž	f	^	ˇ
˘	·	◦	◌	˜	˘	Δ	Ω	μ	π
–	—	‘	’	,	“	”	„	†	‡
•	...	‰	<	>	€	™	∂	Π	Σ
-	√	∞	∫	≈	≠	≤	≥	◊	fi
fl	ğ								

Hague Dominique

Spencerian Ayrshire

Peshawar Kinsey

Princeton Martina

Wilhelm Greta

Therese Tiffany

Twain Maori

Mayer Paraguay

Andaman Krista

Cherry Madelyn

Rosetta Agatha

Rossini Tamara

# Phillip Stine Puck

Petersen McGee

# Harrington

Weinberg Leanna

# Lehman Donny

Guadeloupe Margery

# Southwest Melanie

Greenpeace Emilio

# Bethesda Garza

Sasha McLaughlin

# Nikon Gujarati

JavaScript Danelaw

omile Street † C  
et † Capel Cour  
elite Street † Ca  
† Carthusian St  
† Castle Court †  
ndish Court † C  
Charterhouse Squ  
shire Court † Ch  
isters † Church C

Tipo de letra em uso

anon Alley † Can  
t † Carlisle Aven  
rter Court and C  
reet † Castle Bay  
Catherine Whee  
hancery Lane † C  
quare † Cheapside  
miswell Street † C  
Court † Circus P

## ver.be.te

**NOME MASCULINO**

- 1.) apontamento registado em papel avulso; anotação, nota
- 2.) pequeno papel em que se toma um apontamento
- 3.) ficha de arquivo
- 4.) conjunto das aceções, exemplos e restante informação contida em entrada de dicionário, enciclopédia, glossário, etc.

Do latim verbu-, «palavra» +-ete

Tipo de letra em uso

## aus.te.ro

**ADJETIVO**

- 1.) que revela austeridade; rígido nos princípios, hábitos ou opiniões
- 2.) que não é flexível; severo, rigoroso
- 3.) que revela circunspeção ou formalidade; sério, grave
- 4.) desagradável para os sentidos;



5.) que exige esforço; duro, penoso

6.) sem enfeites ou ornamentos

Do latim austeru-, «rude; áspero»

## con.tem.po.râ.ne.o

### ADJETIVO

1.) que é do mesmo tempo

2.) que é do nosso tempo; hodierno

### NOME MASCULINO

1.) o que é do mesmo tempo

2.) o que tem a mesma idade; coevo

Do latim contemporaneu-, «contemporâneo»

## ob.tem.pe.rar

### VERBO TRANSITIVO

1.) responder humildemente

2.) objetar com modéstia

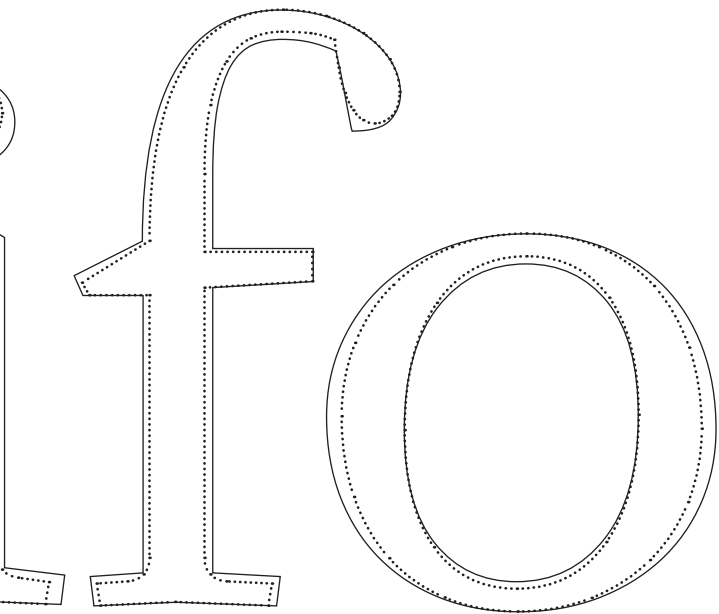
### VERBO TRANSITIVO E INTRANSITIVO

obedecer (a); assentir

Do latim obtemperare, «moderar-se»

Tipo de letra em uso





Perception

Chiswell  
Regular  
(128)

Exception

(118)

Inception

(108)

Abjection

(98)

Collection

(88)

Reception

(78)

Acception

(68)

(58) Interception

(48) Rejection

(38) Connexion

(28) Selection


(18) Profession

(8) Infection

Chiswell  
Caption  
Regular (o)

Ejection





Espécime do tipo Chiswell por Ricardo  
Philippe Dantas, para a unidade curricular  
de Design de Tipos, leccionada por Pedro  
Amado do Mestrado em Design Gráfico  
e Projectos Editoriais na Faculdade de Belas  
Artes da Universidade do Porto.

FACULDADE DE BELAS ARTES  
DA UNIVERSIDADE DO PORTO.