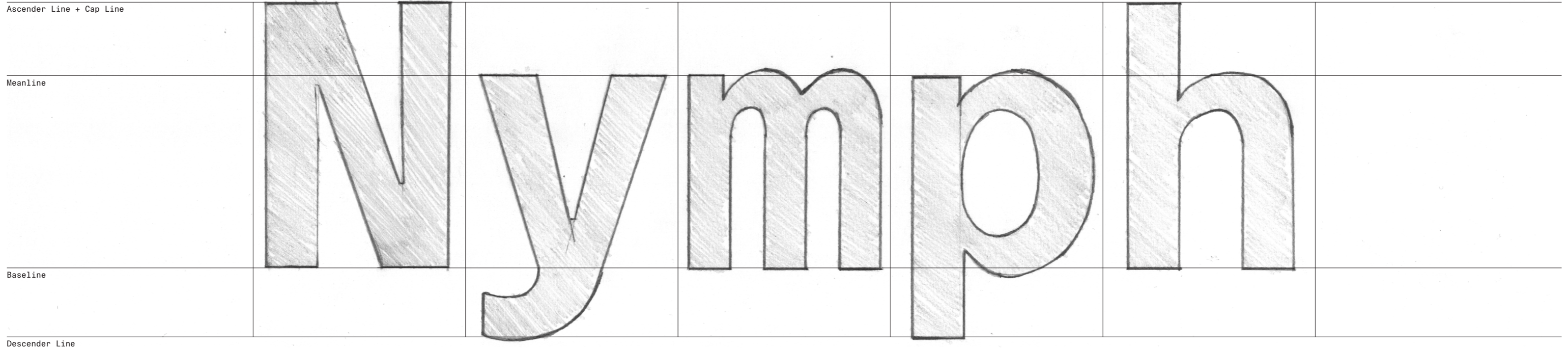


- 1 **Type Group (R-Vox Tier 1)**
Monospaced
- 2 **Type Classification (R-Vox Tier 2)**
Transitional (Real/Neo-Grotesque)
- 3 **Weight**
Bold (700)
- 4 **Width**
Normal (100)
- 7 **Italic Structure**
Roman
- 8 **Contrast**
Low Contrast

- Archetype**
LL Unica77 Mono
- Axis**
Vertical
- Proportions**
Medium x-height; short ascenders and descenders
- Curve Regularity**
Without calligraphic modulation
- Serifs/Joins**
None; clean joins, flat terminals
- Stroke Inclination**
Flat horizontals; without calligraphic stress
- Counterforms**
Small/medium aperture; controlled counterforms



1 Type Group (R-Vox Tier 1)

Serif

Archetype

Garamond

2 Type Classification (R-Vox Tier 2)

Classical (Old Style/Garalde/Grotesque/Grotesk)

Axis

Diagonal

3 Weight

Medium (500)

Proportions

Small x-height; long ascenders and descenders

4 Width

Normal (100)

Curve Regularity

High calligraphic modulation

7 Italic Structure

Roman

Serifs/Joins

Adnate serifs; slanted top serifs on ascenders

8 Contrast

Medium Contrast

Stroke Inclination

Flat horizontals; diagonal stress

Counterforms

Large aperture

Ascender Line

Cap Line

Meanline

Baseline

Descender Line

Hand-drawn sketch of the word "Glyph" in a serif font. The letters are constructed with visible pencil lines and shading, showing the internal structure and counterforms. The sketch is positioned between horizontal guidelines labeled Ascender Line, Cap Line, Meanline, Baseline, and Descender Line.

- 1 **Type Group (R-Vox Tier 1)**
Sans-Serif
- 2 **Type Classification (R-Vox Tier 2)**
Transitional (Real/Neo-Grotesque)
- 3 **Weight**
Regular (400)
- 4 **Width**
Normal (100)
- 7 **Italic Structure**
Italic
- 8 **Contrast**
Low Contrast

- Archetype**
Helvetica
- Axis**
Vertical
- Proportions**
Large x-height; short ascenders and descenders
- Curve Regularity**
Without calligraphic modulation
- Serifs/Joins**
None; clean joins, flat terminals
- Stroke Inclination**
Flat horizontals; without calligraphic stress
- Counterforms**
Small aperture

Ascender Line + Cap Line

Meanline

Baseline

Descender Line

Spaade

- 1 **Type Group (R-Vox Tier 1)**
Slab-Serif
- 2 **Type Classification (R-Vox Tier 2)**
Geometric (Modern/Rational)
- 3 **Weight**
Regular (400)
- 4 **Width**
Normal (100)
- 7 **Italic Structure**
Roman
- 8 **Contrast**
Low Contrast
- 9 **Writing Instrument**
Threads & Ribbons

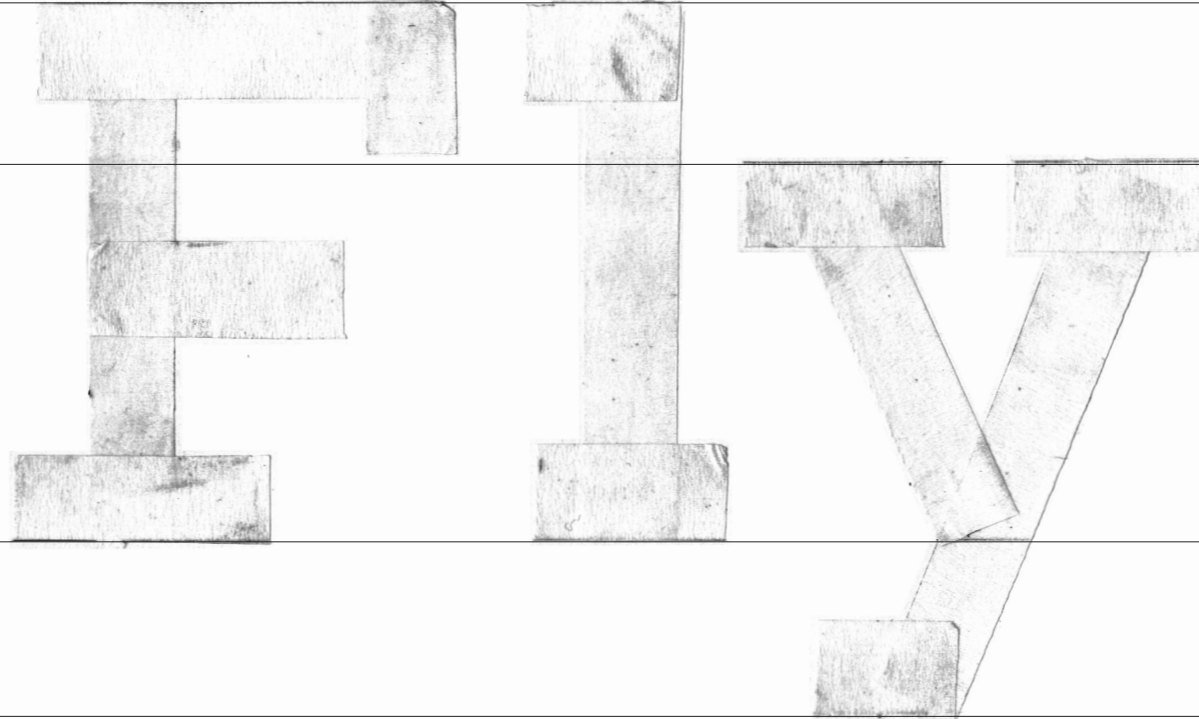
- Archetype**
Rockwell
- Axis**
Vertical
- Proportions**
Medium x-height
- Curve Regularity**
Geometric; without calligraphic modulation
- Serifs/Joins**
Slab serifs; unbracketed joins
- Stroke Inclination**
Flat horizontals; without calligraphic stress
- Counterforms**
Wide and circular

Ascender Line + Cap Line

Meanline

Baseline

Descender Line



1 **Type Group (R-Vox Tier 1)**
Serif

2 **Type Classification (R-Vox Tier 2)**
Transitional (Real/Neo-Grotesque)

3 **Weight**
Regular (400)

4 **Width**
Normal (100)

7 **Italic Structure**
Italic

8 **Contrast**
Medium Contrast

9 **Writing Instrument**
Round/Square Tips

Archetype
Times New Roman

Axis
Slightly diagonal

Proportions
Medium x-height

Curve Regularity
High calligraphic modulation

Serifs/Joins
Bracketed serifs; sharp terminals

Stroke Inclination
Flat horizontals; diagonal stress

Counterforms
Medium aperture; balanced counterforms

Ascender Line
Cap Line

Meanline

Baseline

Descender Line

Heelpoo
eeeo

- 1 **Type Group (R-Vox Tier 1)**
Sans-Serif
- 2 **Type Classification (R-Vox Tier 2)**
Transitional (Real/Neo-Grotesque)
- 3 **Weight**
Thin (100)
- 4 **Width**
Ultra Condensed (50)
- 7 **Italic Structure**
Roman
- 8 **Contrast**
Low Contrast
- 9 **Writing Instrument**
Round/Square Tips

- Archetype**
Univers
- Axis**
Vertical
- Proportions**
Large x-height
- Curve Regularity**
Without calligraphic modulation
- Serifs/Joins**
None; clean joins; oblique terminals
- Stroke Inclination**
Flat horizontals; without calligraphic stress
- Counterforms**
Medium aperture

Ascender Line + Cap Line

Meanline

Baseline

Descender Line



Play

- 1 **Type Group (R-Vox Tier 1)**
Sans-Serif
- 2 **Type Classification (R-Vox Tier 2)**
Transitional (Real/Neo-Grotesque)
- 3 **Weight**
Thin (100)
- 4 **Width**
Ultra Condensed (50)
- 7 **Italic Structure**
Roman
- 8 **Contrast**
Low Contrast

- Archetype**
Univers
- Axis**
Vertical
- Proportions**
Large x-height
- Curve Regularity**
Without calligraphic modulation
- Serifs/Joins**
None; clean joins; oblique terminals
- Stroke Inclination**
Flat horizontals; without calligraphic stress
- Counterforms**
Medium aperture

Ascender Line + Cap Line

Meanline

Baseline

Descender Line

Play